



Trustees' Annual Report for the period

	Period start date				Period end date		
From	01	10	2006	To	30	09	2007

Reference and administration details

Charity name ENVIRONCLEAN COMMUNITY GROUP

Other names charity is known by

Registered charity number (if any) 1120470

Charity's principal address 1119 Bourges Boulevard

Peterborough

Postcode

PE1 2AT

Names of the charity trustees who manage the charity

	Trustee name	Office (if any)	Dates acted if not for whole year	Name of person (or body) entitled to appoint trustee (if any)
1	Ricardo Ferreira	1119 Bourges Boulevard PE1 2AT		
2	Caroline Kariuki	1119 Bourges Boulevard PE1 2AT		
3	Kwame Kihoro	1119 Bourges Boulevard PE1 2AT		
4	Ken Washington	P.O Box 12085 Nyeri Kenya		
5	Nicolas Gatugi	P.O Box 17354-00510 Nairobi Kenya		

Structure, governance and management

Description of the charity's trusts

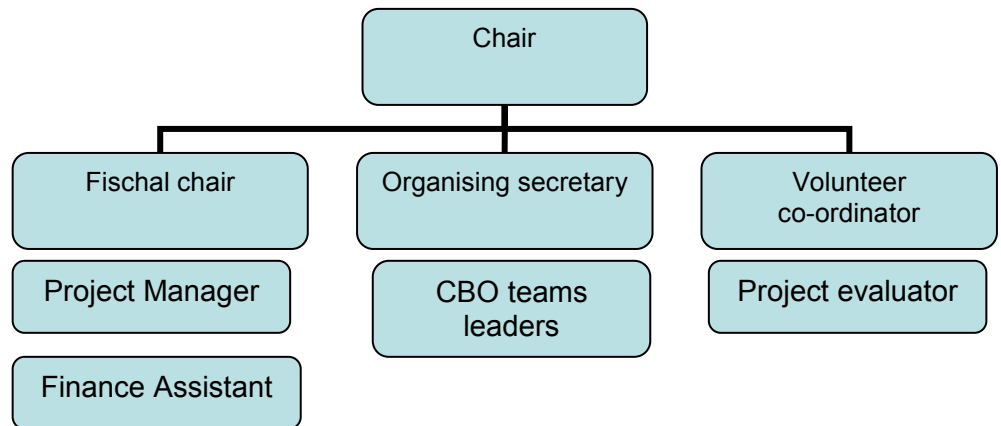
Type of governing document (eg. trust deed, constitution)	Constitution
How the charity is constituted (eg. trust, association, company)	Association
Trustee selection methods (eg. appointed by, elected by)	Elected by members

Additional governance issues (Optional information)

You **may choose** to include additional information, where relevant, about:

- Policies and procedures adopted for the induction and training of trustees.
- The charity's organisational structure and any wider network with which the charity works.
- Relationship with any related parties.
- Trustees' consideration of major risks and the system and procedures to manage them.

For induction and training of trustees, we follow the procedures set by the Charity Commission UK.
The organisational structure is based on organising resources to perform specialised tasks to attain goals of Environclean



We work with local organisation in Kenya e.g. City Garbage recyclers, Umande Trust, Greenbelt movement. We are part of networks e.g. nabuu.com, Kabissa, CleanUp World Australia

Environclean is an equal opportunity employer. We have a recruitment policy detailing our ethos. We also have an operations procedure outlining our operations, areas of operation and protocols on employee management, children protection, disciplinary actions etc.

Objectives and activities

Summary of the objects of the charity set out in its governing document

The protection and preservation of the environment for the public benefit by:

- The promotion of waste reduction, re-use, reclamation and use of recycled products within the area of Eastlands, Nairobi, Kenya.
- Advancing the education of the public about all aspects of waste generation, waste management and waste recycling

Summary of the main activities in relation to these objects

- Poverty reduction through income generation, job creation;
 - create recycling sites in low income neighbourhoods to enable reclaim of materials-glass, paper, wood, metal etc
- Offer social services in the form of health, welfare and environmental education, crime reduction and prevention;
 - provide environmental awareness training to youth, women
 - provide activities helpful to community to get rid of idleness
 - construct eco-projects beneficial to local communities e.g. bio-latrines
- Contribute to environmental management through pollution reduction, recycling and carrying out innovative sustainable technologies for local communities.
 - establishing composting sites
 - introduce renewable energy technologies to local communities
 - create organic gardens using native plants to Kenya
 - encourage venture into biofuels by growing energy crops like jatropha

Additional details of objectives and activities (Optional information)

You **may choose** to include further statements, where relevant, about:

- Policy on grantmaking
- Policy programme related investment
- Contribution made by Volunteers

We are not a grant-making body what we do is identify local problems then go out and work with the locals to cause change in a positive way. We however welcome applications from locals of the areas we operate which are screened by trustees who contact prospective applicants to find out more about their project and how Environclean can help. We hope that as we grow we will have an outlined policy to help others by making grants after screening project which will do most good to locals in our areas of operation. Volunteers are the back-bone of our work. So we have a policy to encourage participation especially of the locals in the project we undertake. They make our work sustainable so we highly encourage their participation.

Achievements and performance

Summary of the main achievements of the charity during the year

ENVIRONCLEAN SPECIAL MINI-TARGETS: 2006-2007

- Collected at 10 tonnes of redundant equipment for potential reuse;
- Divert at 40 tonnes materials from landfill by: re-distributing redundant equipment for re-use, recycling bottles and paper;
- Help 2 organisations save money by buying low cost equipment;
- Help 1 neighbourhoods with 500 hundreds residents to improve their recycling performance;
- Create 5 jobs in deprived Lunga Lunga slums, Eastlands Nairobi

Financial review

Brief statement of the charity's policy on reserves

At the moment we do not have much reserve as we are small. Our trustees and management are very keen not to be holding onto money unnecessarily, but because we believe sustainability is paramount to our beneficiaries we feel this is necessary in the future. We are formulating a reserves policy for the future when our size becomes larger, our aims and operational methods change. We shall have a full examination of existing funds and assets, income streams and expenditure, then assessment of any risks that could affect these figures and the potential impacts of those risks.

Details of any funds materially in deficit

nil

Further financial review details (Optional information)

You **may choose** to include additional information, where relevant about:

- The charity's principal sources of funds (including any fundraising).
- How expenditure has supported the key objectives of the charity.
- Investment policy and objectives including any ethical investment policy adopted.

Principal sources of cash are from donations from individuals, membership subscription, friends' schemes, occasional fundraising drives, small startup grants (Peterborough City Council-national lottery) Gifts-in-kind: gardening tools given by Tyneside Tools, Newcastle upon tyne
Donated services: free letterhead designs and printing

Our overheads are minimal. We spend most of our donations on the community project we undertake at the moment e.g. cleanups, building bio-latrines, beautification of slums through plants. The cost in fundraising are mainly on receipts, venue hire whilst governance costs are mainly on 4 trustee meetings each yr. majority of our income is ploughed back to community. We hope to keep that trend

Other optional information

Declaration

The trustees declare that they have approved the trustees' report above.

Signed on behalf of the charity's trustees

Signature(s)

Full name(s)

Position (eg secretary, chair,
etc)

Date
